

# MONTHLY MEMBERSHIP PROGRESS REPORT

District 16 L

Results as of: 9/30/2023

GMT:

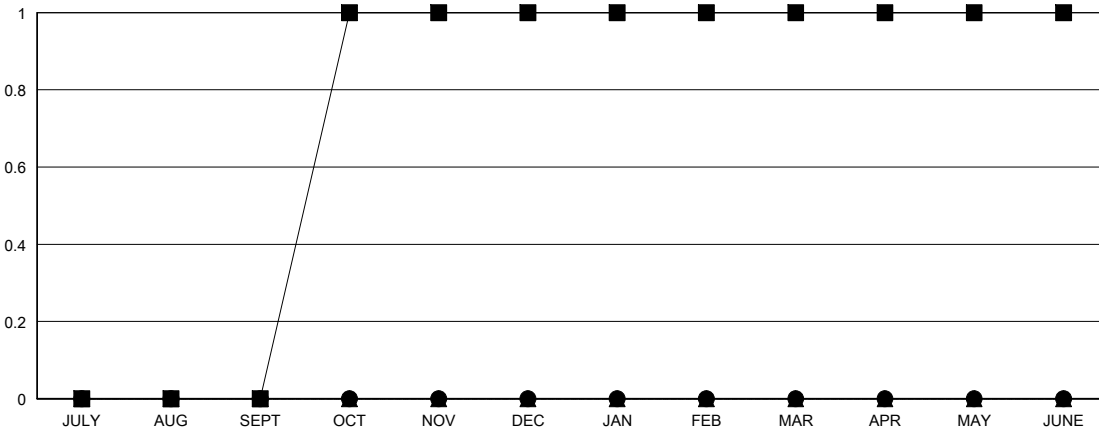
LOCATION NEW JERSEY

GMT CA

| Clubs                 |               |           |               |
|-----------------------|---------------|-----------|---------------|
| RESULTS FOR 2023-2024 |               |           |               |
| QUARTER               | NEW CLUB GOAL | NEW CLUBS | DROPPED CLUBS |
| JULY/AUG/SEPT         | 0             | 0         | 0             |
| OCT/NOV/DEC           | 1             | 0         | 0             |
| JAN/FEB/MAR           | 0             | 0         | 0             |
| APR/MAY/JUNE          | 0             | 0         | 0             |

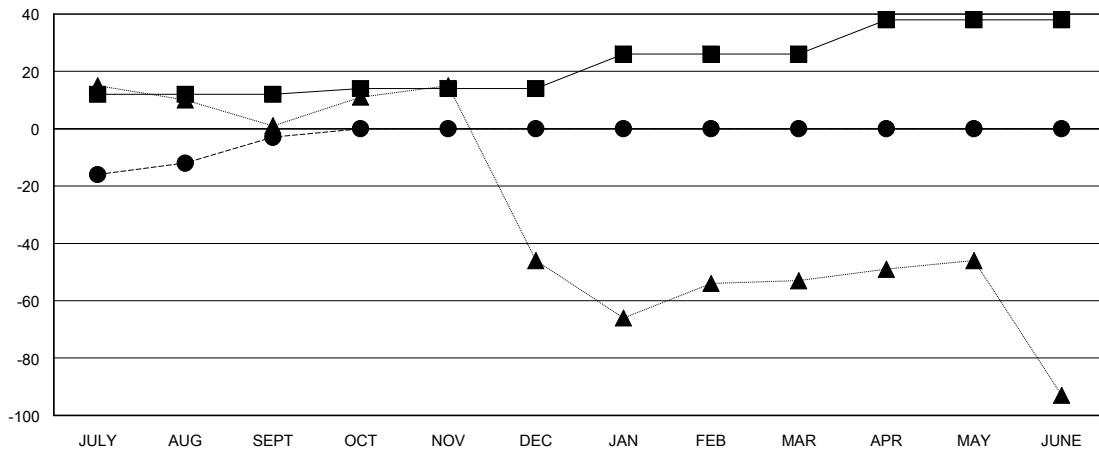
| Members               |                        |                      |  |
|-----------------------|------------------------|----------------------|--|
| RESULTS FOR 2023-2024 |                        |                      |  |
| QUARTER               | MEMBER GROWTH NET GOAL | MEMBER GROWTH ACTUAL | DROPPED MEMBERS ACTUAL (including transfers) |
| JULY/AUG/SEPT         | 12                     | 45                   | 40   |
| OCT/NOV/DEC           | 2                      | 0                    | 0  |
| JAN/FEB/MAR           | 12                     | 0                    | 0  |
| APR/MAY/JUNE          | 12                     | 0                    | 0  |

GOALS AND ACTUAL NEW CLUBS CUMULATIVE



- - CURRENT YEAR GOALS FOR NEW CLUBS
- - CURRENT YEAR ACTUAL NEW CLUBS
- ▲ - LAST YEAR ACTUAL NEW CLUBS

GOALS AND ACTUAL MEMBERS CUMULATIVE



- - MEMBER GROWTH NET GOAL
- - MEMBER GROWTH ACTUAL
- ▲ - LAST YEAR MEMBERSHIP ACTUAL

|                        |           |
|------------------------|-----------|
| DROPPED CLUBS: 0       |           |
| <b>DROPPED MEMBERS</b> |           |
| DECEASED               | 4         |
| CLUB CANCELLED         | 0         |
| OTHER                  | 37        |
| <b>TOTAL</b>           | <b>41</b> |

14 CLUBS OF 50 ADDED 1 OR MORE NEW MEMBERS

| GENDER DISTRIBUTION |              |
|---------------------|--------------|
| MALE                | 844 (64.82%) |
| FEMALE              | 454 (34.87%) |

[CLICK HERE FOR CUMULATIVE MEMBERSHIP DATA](#)

|                                 |     |
|---------------------------------|-----|
| TOTAL FAMILY UNIT MEMBERS       | 212 |
| FAMILY MEMBERS PAYING HALF DUES | 112 |